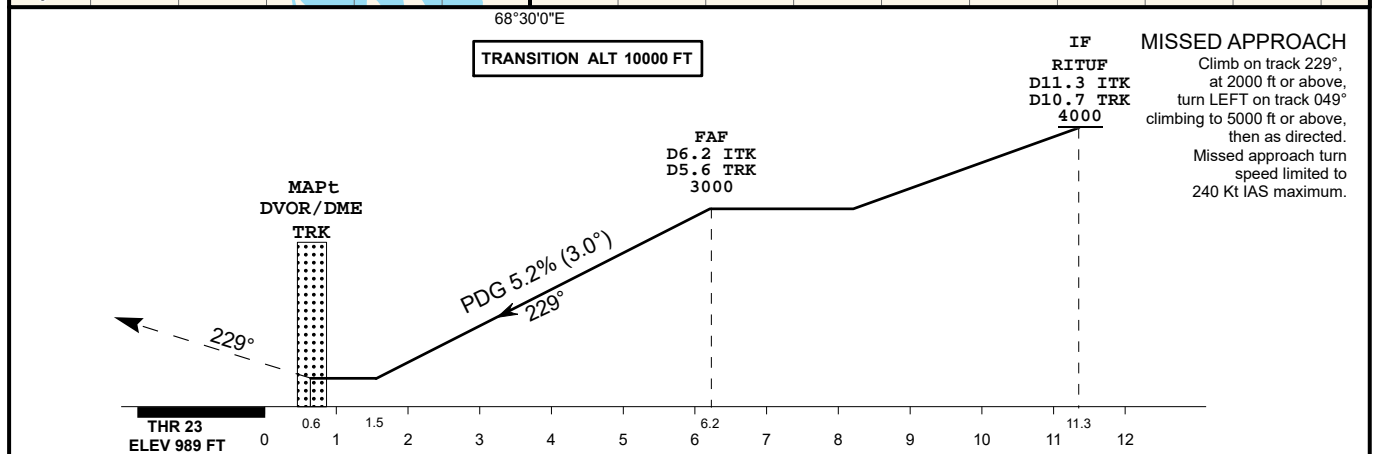
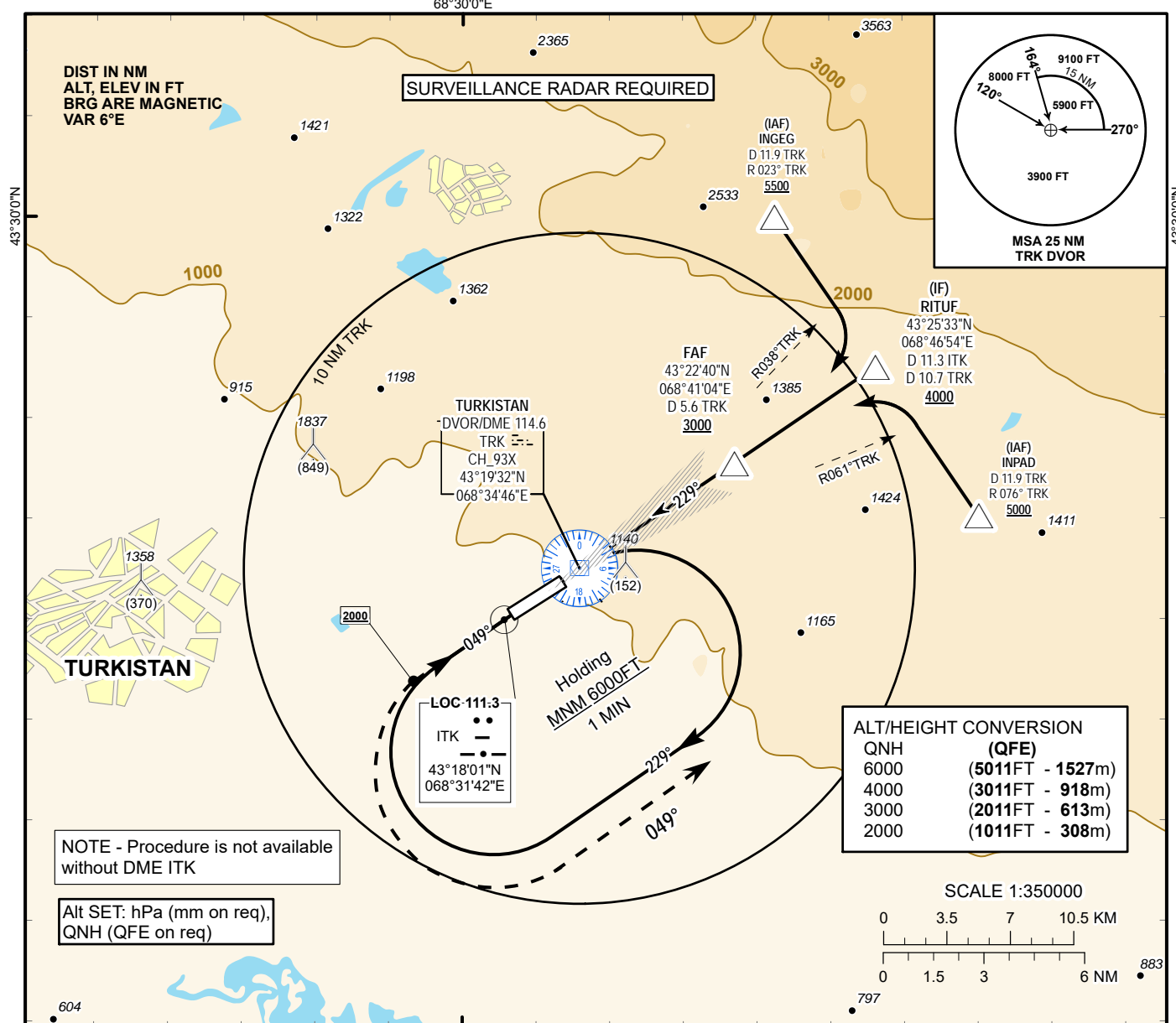


INSTRUMENT
APPROACH
CHART - ICAOAERODROME ELEV **989 FT**
HEIGHTS RELATED TO
AD ELEVTURKISTAN TOWER 131.3
TURKISTAN ATIS (EN) 124.4
TURKISTAN ATIS (RU) 118.3TURKISTAN
LOC/DME Y
RWY 23

MISSED APPROACH

Climb on track 229°,
at 2000 ft or above,
turn LEFT on track 049°
climbing to 5000 ft or above,
then as directed.
Missed approach turn
speed limited to
240 Kt IAS maximum.

Aircraft Category		A	B	C	D	DIST to THR	NM	6.2	5.0	4.0	3.0	2.0	1.0
Straight-in Approach OCA/H						DME TRK	NM	5.6	4.4	3.4	2.4	1.4	0.4
	LLZ (GP INOP)					ALTITUDE	FT	3000	2630	2312	1993	1675	1356
						HEIGHT	FT	2011	1641	1323	1004	686	367
DME ITK ZERO RANGED TO THR RWY 23													
Aerodrome Operating Minima MDH ft x RVR(CMV)	LLZ (GP INOP)					GS	Kt	80	100	120	140	160	180
						Desc Rate (5.2%)	ft/min	420	530	640	740	840	950
						FAF-MAPt	min:sec	3:45	3:00	2:30	2:08	1:52	1:40

TURKISTAN
LOC/DME Y RWY 23 AERONAUTICAL DATA TABULATION

LOC/DME approach to RWY23 from INGE, INPAD, RITUF	
Fix/point	Coordinates
INGE (IAF) R023°, D11.9 TRK	43° 30' 01.0"N 068° 42' 43.6"E
INPAD (IAF) R076°, D11.9 TRK	43°21'05.6"N 068°51'04.6"E
TRK DVOR/DME	43° 19' 32.3"N 068° 34' 46.1"E
RITUF (IF) D11.3 ITK, D10.7 TRK	43° 25' 33.4"N 068° 46' 54.4"E
(FAF) D6.2 ITK, D5.6 TRK	43° 22' 40.0"N 068° 41' 04.4"E
THR RWY23	43° 19' 10.27"N 068° 34' 01.98"E
ITK LLZ	43° 18' 00.6"N 068° 31' 42.1"E
Final approach descent angle is 3°	